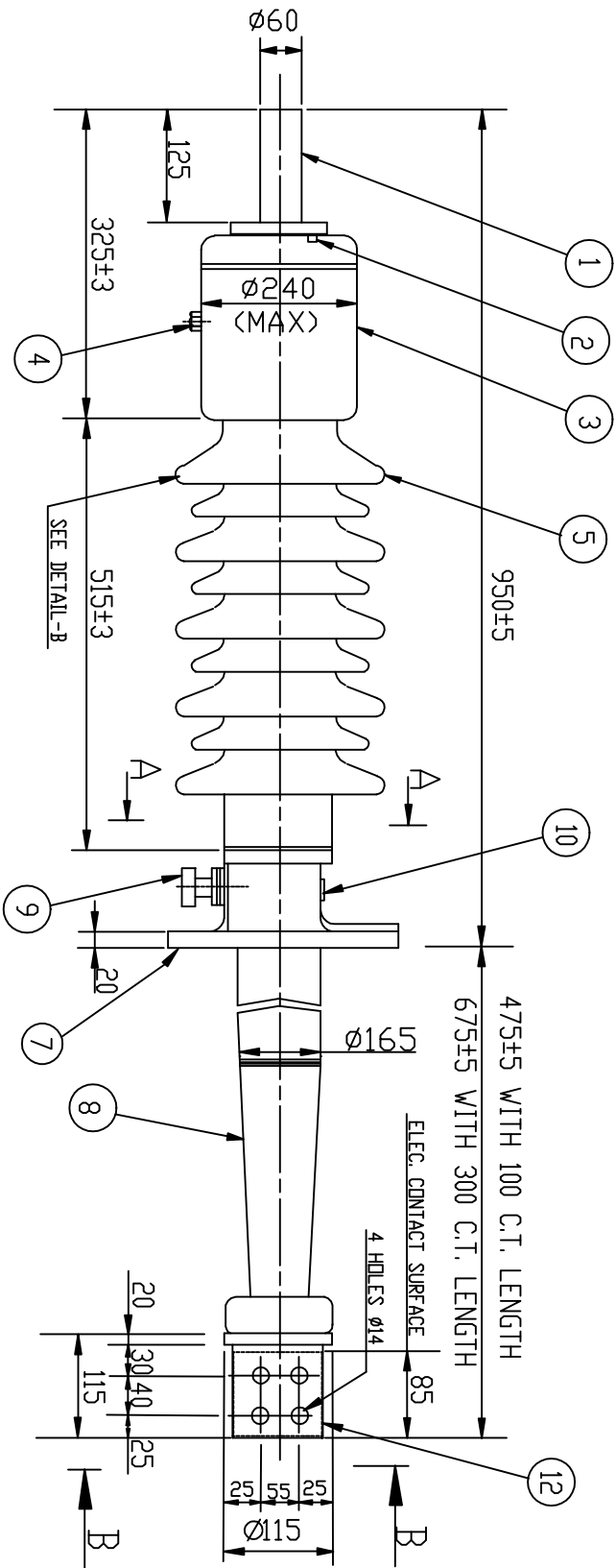


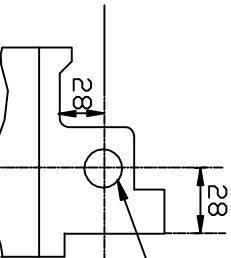
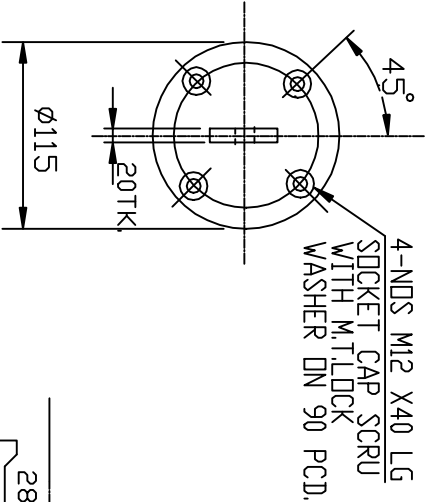
V6901-C-3CB DN GRD



QTY.	IT.	DESCRIPTION	MATERIAL
1	01	TOP TERMINAL	COPPER
2	02	FILLING PLUG	S.S. STEEL
1	03	TOP CAP	AL. ALLOY
1	04	DIL LEVEL GAUGE	TOUGHENED GLASS
1	05	PORCELAIN INSULATOR	PORCELAIN
1	06	MOUNTING FLANGE	AL. ALLOY
1	07	BOTTOM PORCELAIN	PORCELAIN
1	08	TEST TAP	AL/NYLON
1	09	BOTTOM TERMINAL	COPPER FORGING
1	10	RATING PLATE	AL. ANODISED

TECHNICAL DETAILS

RATED VOLTAGE : 52kV
RATED CURRENT : 3150 A
DRY PF WITHSTAND VOLTAGE ONE MINUTE : 105 kV
BIL : 250 kVp
STANDARD APPLICABLE : IS 2099/IEC137
MINIMUM CREEPAGE DISTANCE : 1300 mm
ALTITUDE : ≤ 1000 m
ANGLE OF MOUNTING : 30°
APPLICATION : DIL-AIR



DETAIL-A

